

Apartamentos T3

Planta (Apartamento T3 - 301)

(239 m²)

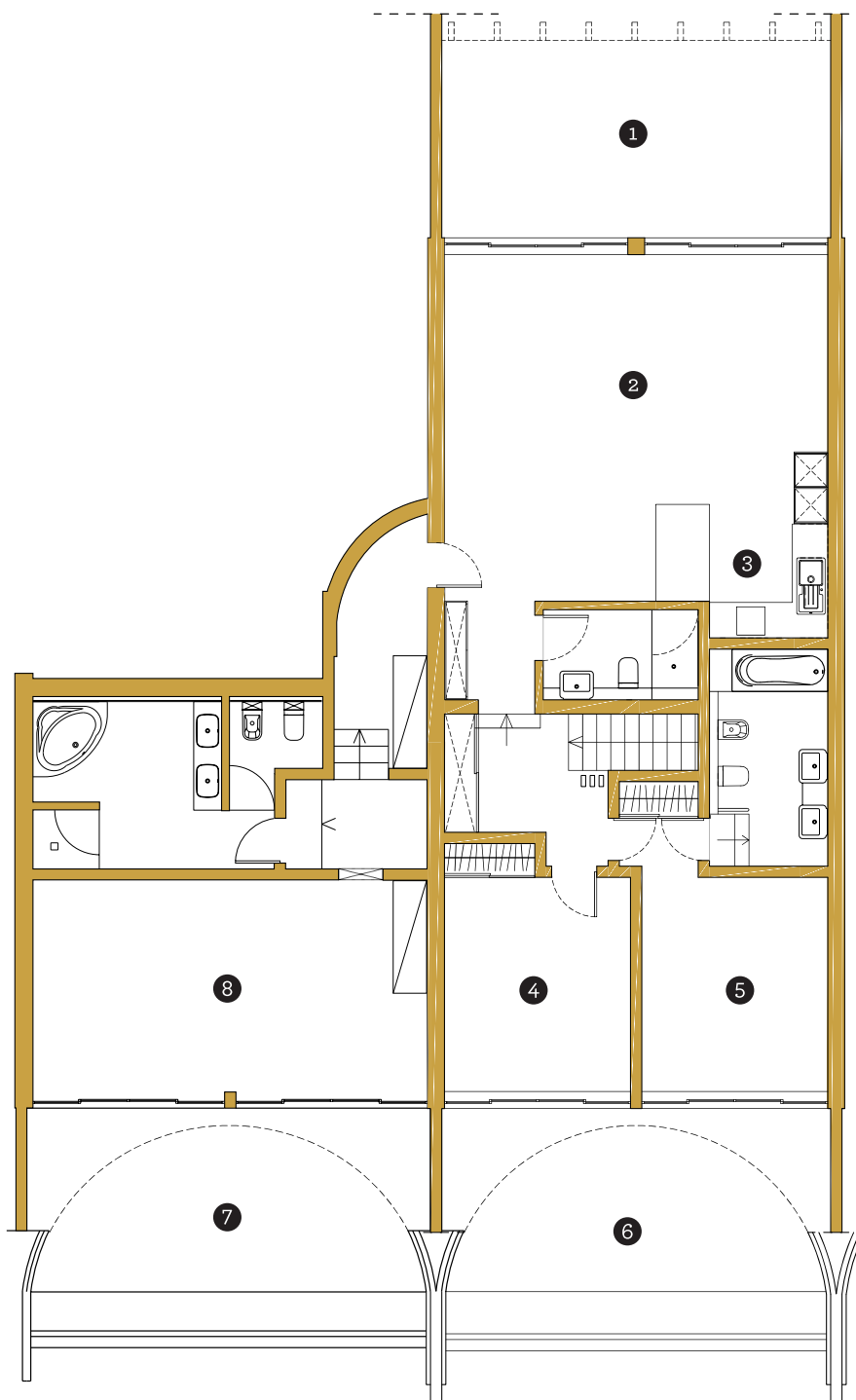


QUINTA DO LAGO
COUNTRY CLUB

Three-bedroom apartment T3

Floor plan (Three-bedroom apartment - 301)

(239m²)



- 1 - Terraço | Balcony
- 2 - Sala | Living room
- 3 - Kitchenette
- 4 - Quarto | Bedroom
- 5 - Quarto | Bedroom
- 6 - Terraço | Balcony
- 7 - Terraço | Balcony
- 8 - Quarto | Bedroom